



FREIGHT CLUSTER PLAN

IN COOPERATION WITH **ARC**

ARC FREIGHT ADVISORY TASK FORCE
AUGUST 8, 2023

PRESENTED BY



METRO ANALYTICS

IN ASSOCIATION WITH



Agenda:

- **Introduction and Purpose of Study**
- **Prevailing Issues**
- **Anticipated Outreach Activities**
- **Inventory and Assessment Preliminary Results**
- **Next Steps: Inventory and Assessment Report, Best Practices Report**



Purpose:

- **Understand existing freight assets and surrounding issues**
- **Guide future development of freight assets to create sustainable industrial development**
- **Coordination of ongoing and future projects**
- **Provide a cost-effective opportunistic work program**

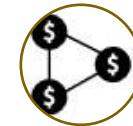
Key focus areas:



Promote a safe, balanced transportation environment for freight and multimodal travel



Promote economic development



Identify appropriate industrial land uses



Promote efficient transportation solutions



Protect nearby communities



Engaging the private sector and community stakeholders



Collaborative Team Roles:



METRO ANALYTICS

- **Prime Firm: Project Identification and Prioritization, Freight and Economic Analysis**



- **Traffic Study, Work Program Development, Roadway Design, GDOT Coordination**



- **Stakeholder Involvement, Outreach Support, Social Media**

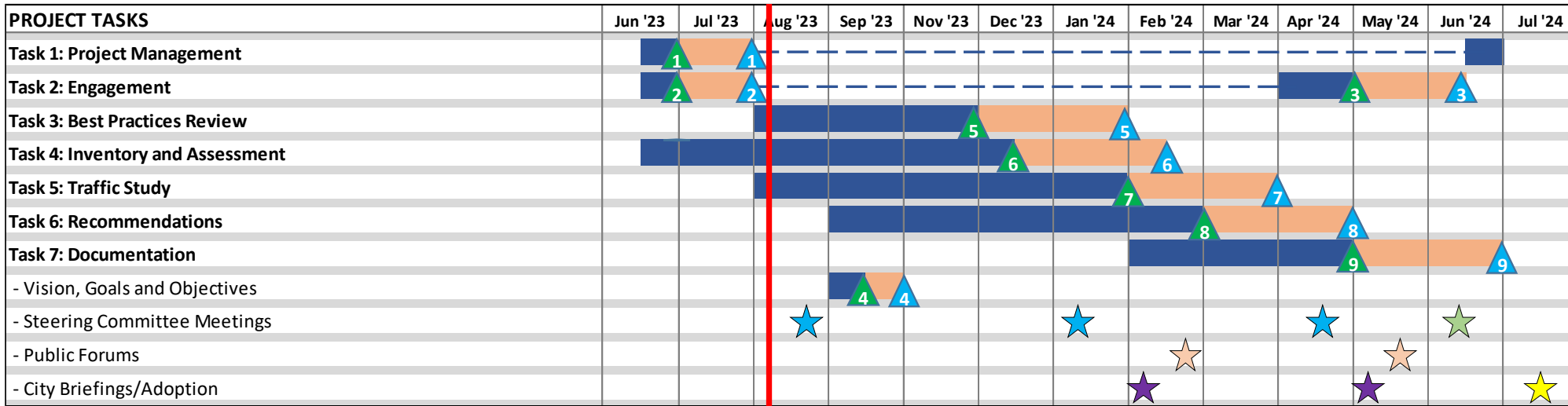


KB | ADVISORY GROUP

- **Market and Real Estate Assessment, Industrial Development Best Practices**



Project Schedule:

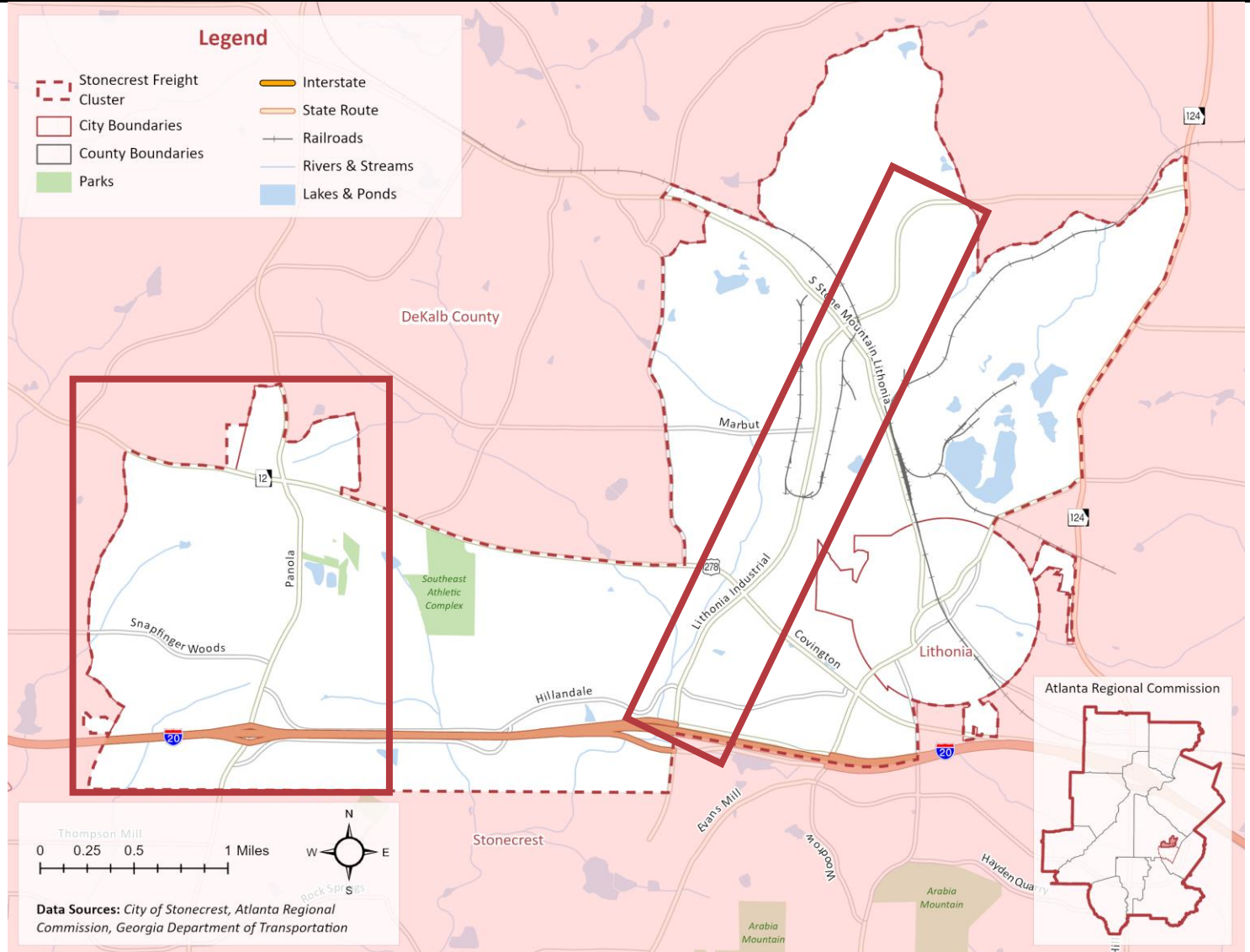


- Steering Committee Meetings
- Optional Steering Committee Meeting (If Needed)
- Public Forums
- City Briefings
- Adoption by City
- 1 Project Management Plan
- 2 Stakeholder Engagement and Outreach Plan
- 3 Summary of Public Involvement Activities
- 4 Vision, Goals and Objectives
- 5 Best Practices Report
- 6 Inventory and Assessment Report
- 7 Traffic Study Report
- 8 Recommended Work Program/Policy Recommendations
- 9 Recommendations Final Report and Executive Summary
- Denotes Internal Review Period



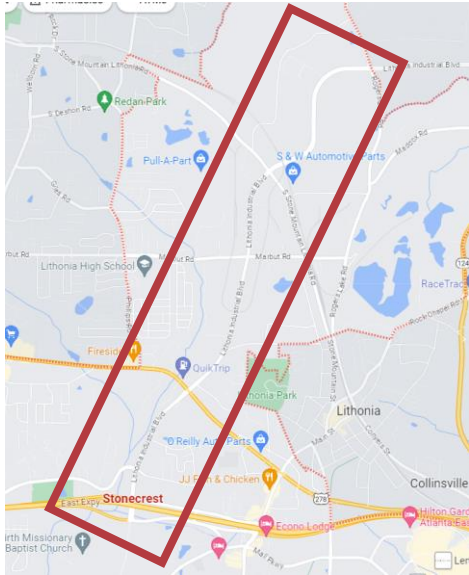
Overview of the Study Area

- Study area consists of the northern Stonecrest primarily north of I-20.
- Two major industrial areas
 - Lithonia Industrial Boulevard
 - Panola Road and Snapfinger Woods Drive
- City of Lithonia
 - Commercial areas near Max Cleland Blvd. and Swift Street
- Arabian Mountain National Heritage Area



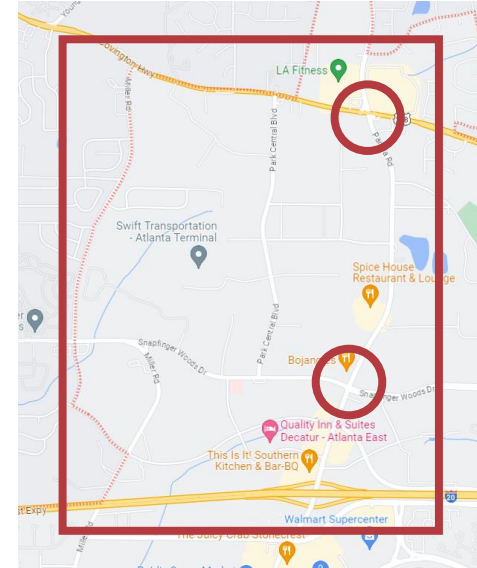
Prevailing Issues:

- **Two Primary Industrial Areas (Lithonia Industrial District, Park Central/Panola Road Corridor)**



- **Lithonia Industrial District**

- **Aging Development**
- **Arabia Mountain National Heritage Area**
- **Insufficient Roadways for Freight**



- **Park Central/Panola Road Corridor**

- **Access Issues at US 278/Covington Highway and Snapfinger Woods Drive**

- **Recent influx of truck parking lots**
- **Requirements that restrict development of new gas stations**
- **Integrating NEVI Plan into the City's infrastructure (w presence of I-20)**



Anticipated Outreach Activities:

- **Stakeholder Identification**
- **Steering Committee (3-4 Meetings)**
- **Stakeholder Interviews (Identify freight related challenges, facility operations, trends, potential projects)**
- **Surveys**
 - **Driver Intercept Survey (Driver feedback about access, congestion, parking and safety)**
 - **Stakeholder/Community Survey (Feedback on access, commute times, multimodal issues)**
 - **Follow-up Stakeholder Survey (Validate draft recommendations)**
- **Public Forums**
- **Communication Tools**
 - **Project Landing Page**
 - **Social Media**



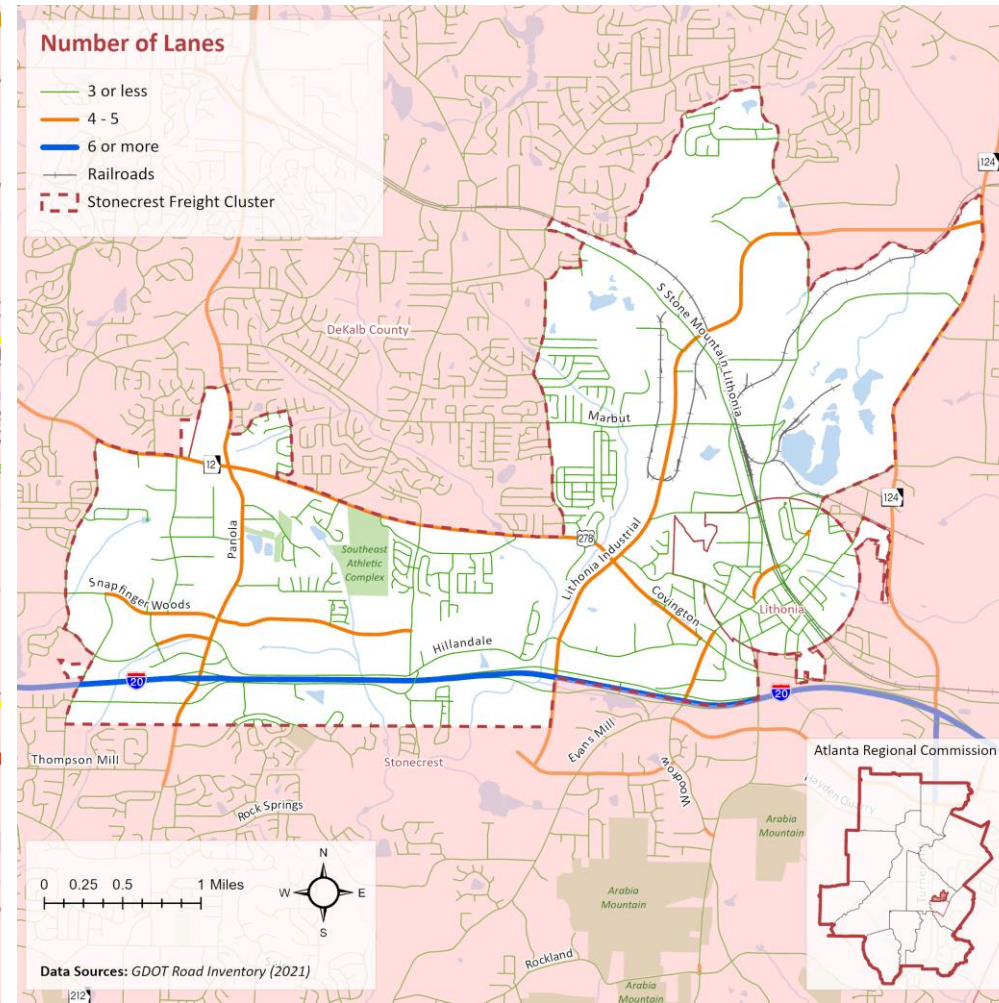
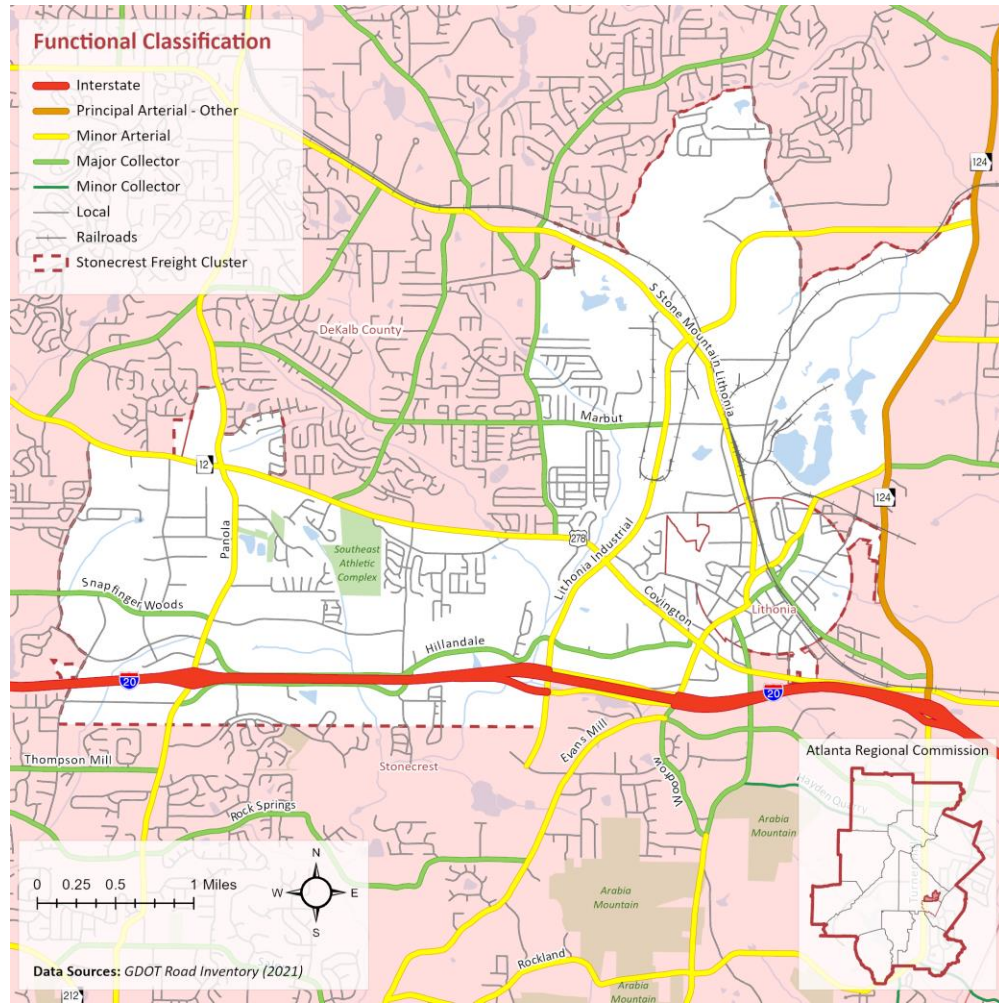
Roadway Characteristics: Truck Traffic

Functional Class and Number of Lanes

Most minor arterials and major collectors are 4 lane roadways

Still a few that are 2-3 lanes

- S Stone Mountain Lithonia Rd.
- Parts of Evans Mill
- Hillendale Road
- Marbut Road



Roadway Characteristics: General Traffic

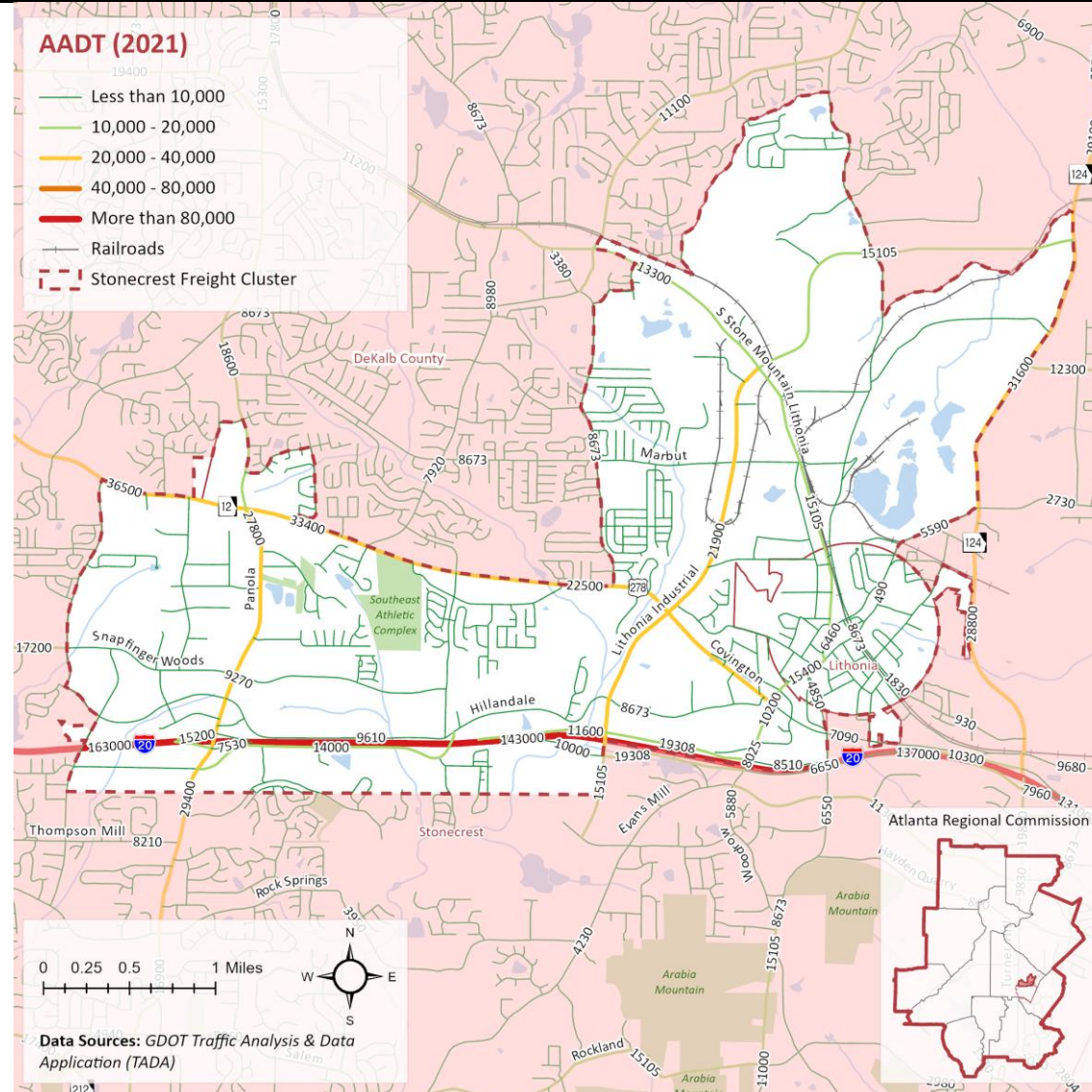
Existing AADT (2021)

A review of the existing traffic volumes identifies the busiest roads in the study area as:

- I-20, Panola Road, Lithonia Industrial Boulevard, US 278/SR 12, and SR 124.

Other roadways of note:

- S Stone Mountain Lithonia Road, Evans Mills Road, Old Hillandale Road and Fairington Road.

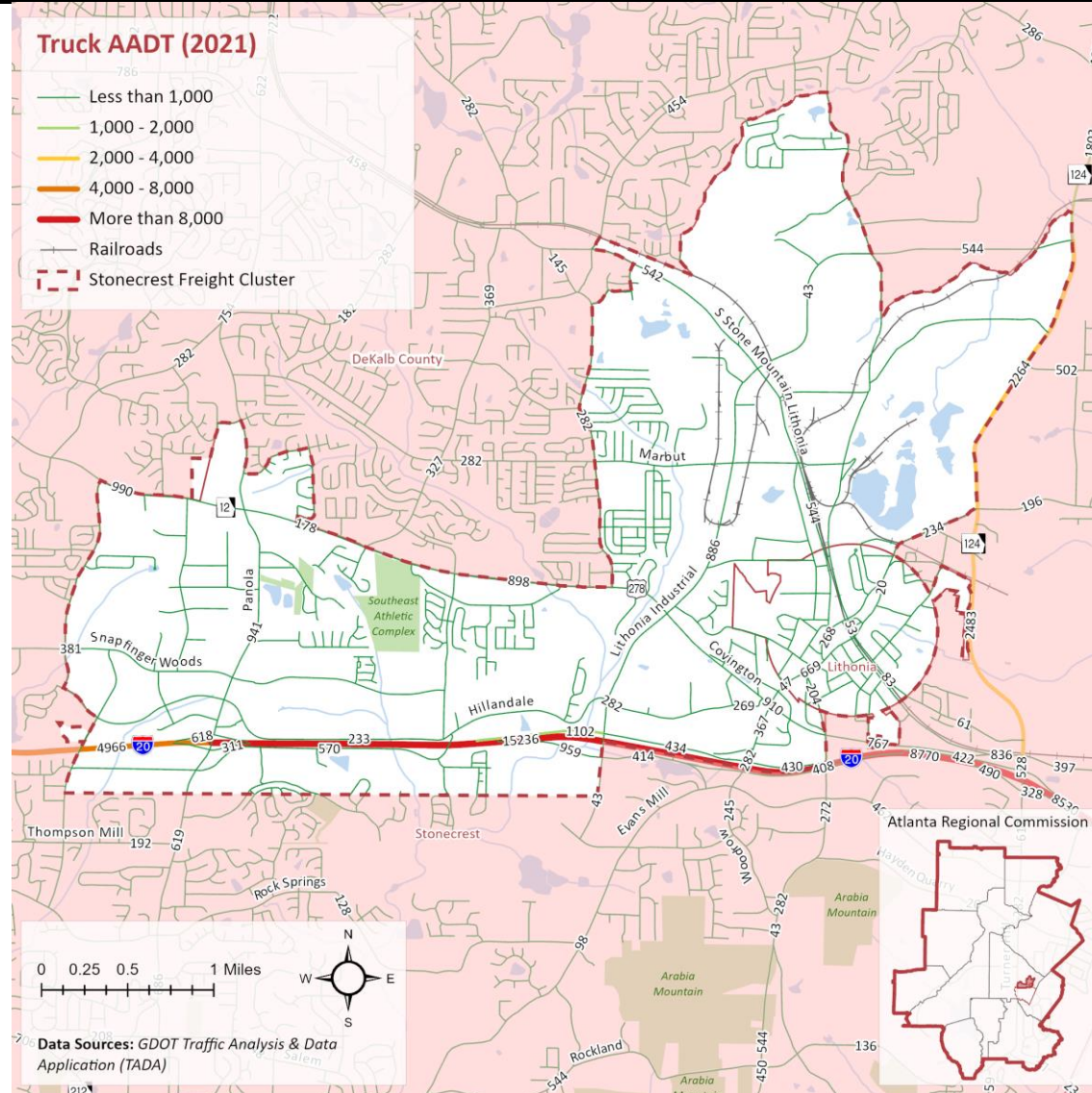


Roadway Characteristics: Truck Traffic

Existing Truck Volumes

Highest freight volumes:

- I-20
- SR 124



Roadway Characteristics: Truck Traffic

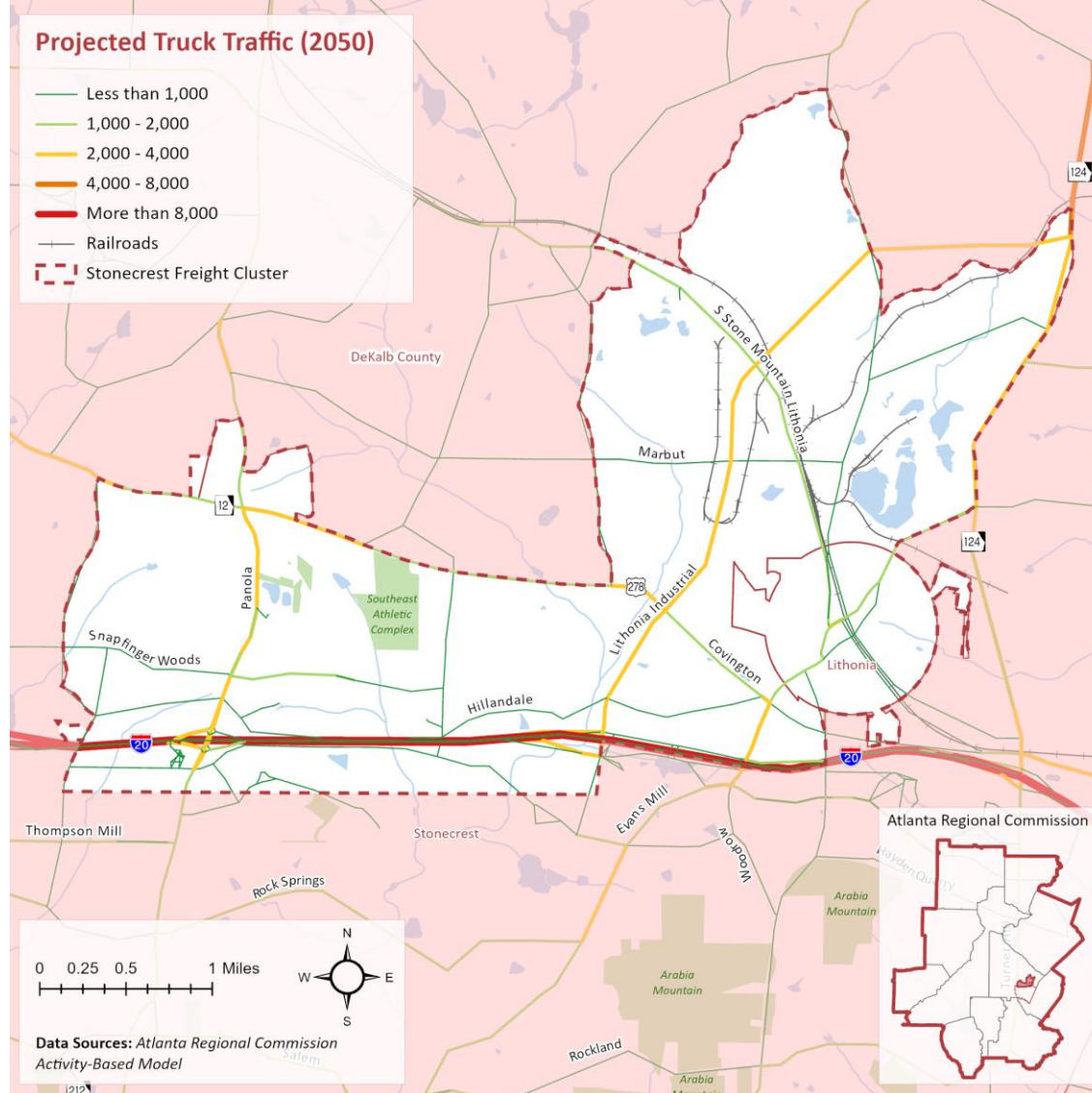
Projected Truck Traffic

Large increase in truck traffic

- Panola Road
- US 278, from Panola to Lithonia Industrial
- Lithonia Industrial
- Evans Mills, south of US 278

Projected truck traffic increase

- NW corner of the study area near SR 124/Lithonia Industrial Blvd



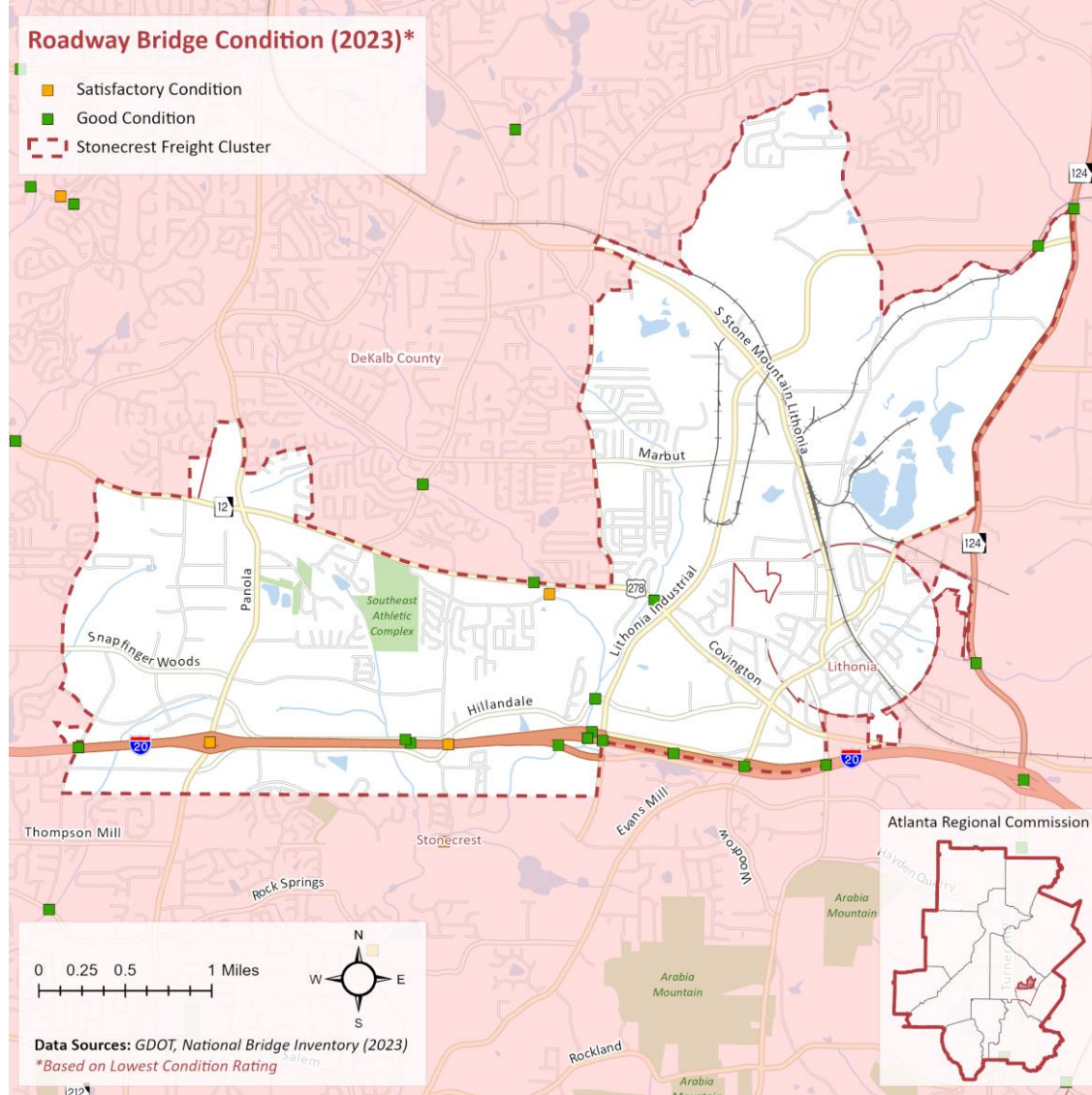
Roadway Characteristics: Bridges

Bridge Conditions

Lowest (bridge) rating shows the poorest condition among Deck, Superstructure, Substructure, Channel or Culvert on a scale of 1-9.

Three bridges identified with satisfactory ratings (LR = 6).

- Two along I-20
- One on Local road south of Covington Highway



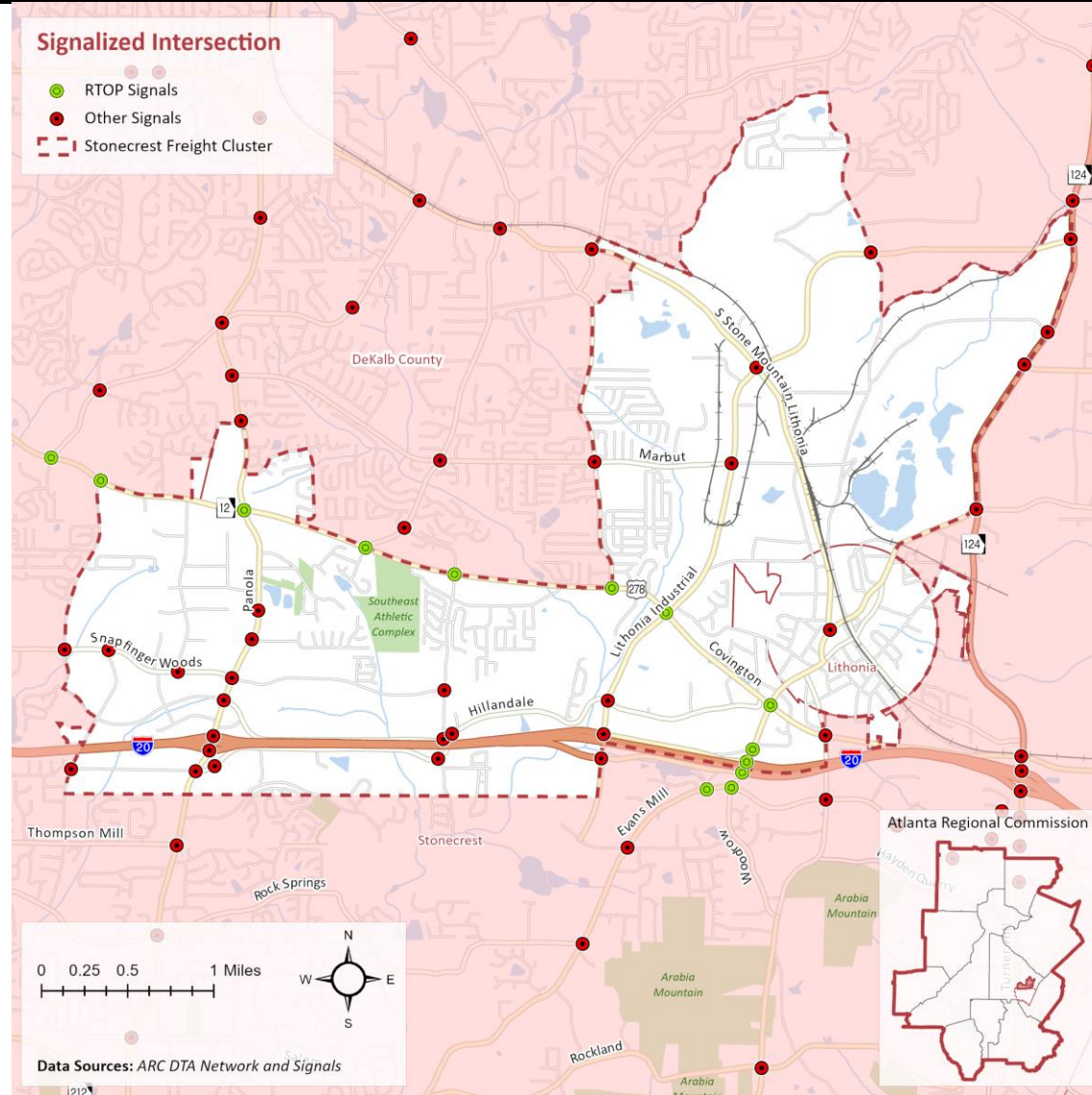
Roadway Characteristics: Bridges

Signalized Intersections

RTOP Program

- Covington Highway/US 278
- Evans Mill

Significant number of signals along Panola Road and Snapfinger Woods Drive.

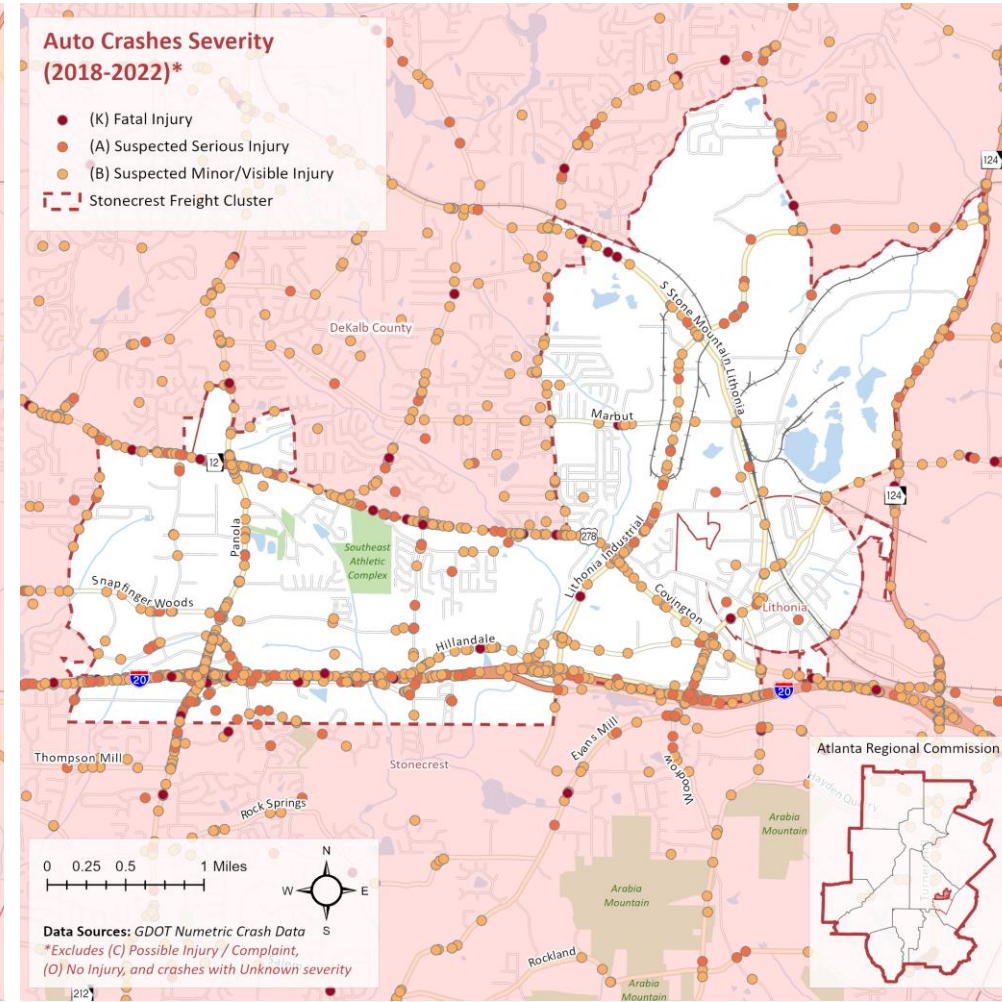
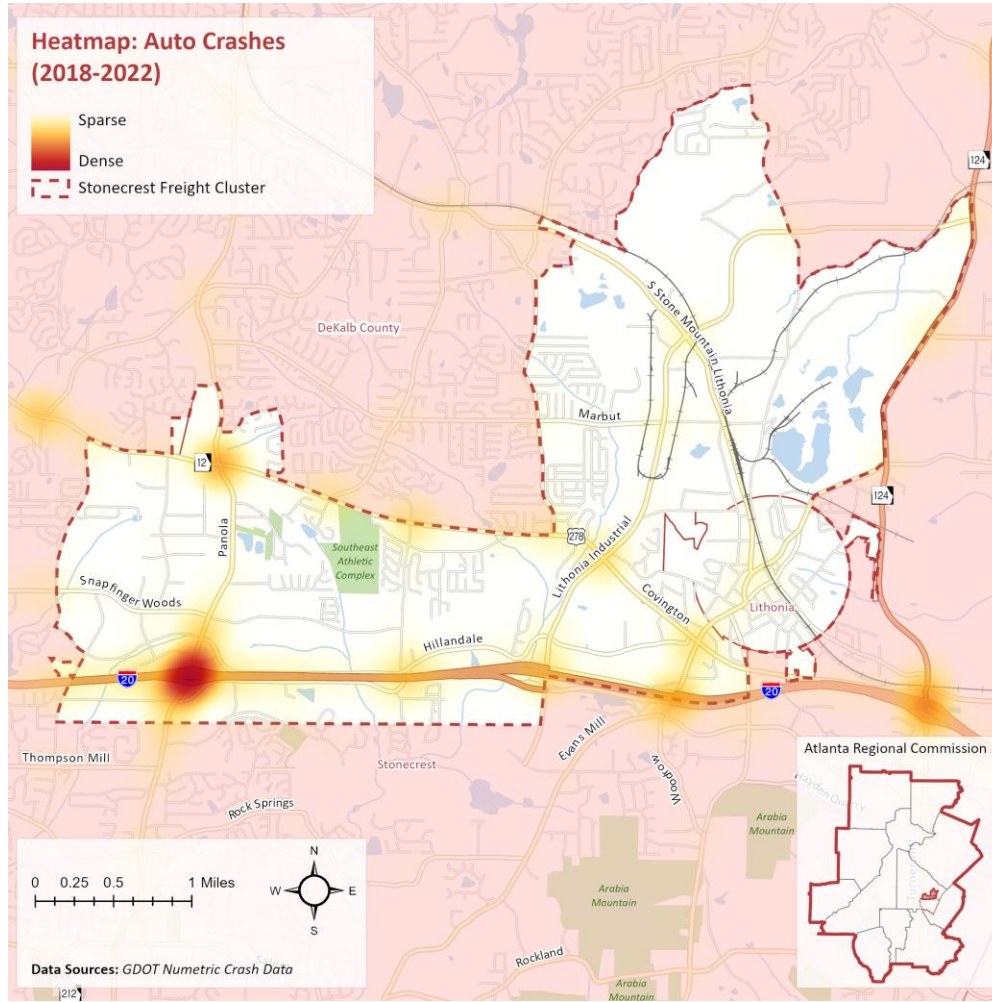


Safety Characteristics: Crashes

All Crashes

Most accidents occur at the I-20 and Panola Road intersection

Other locations include Panola Road/US 278 and Evans Mills Road



Safety Characteristics: Crashes

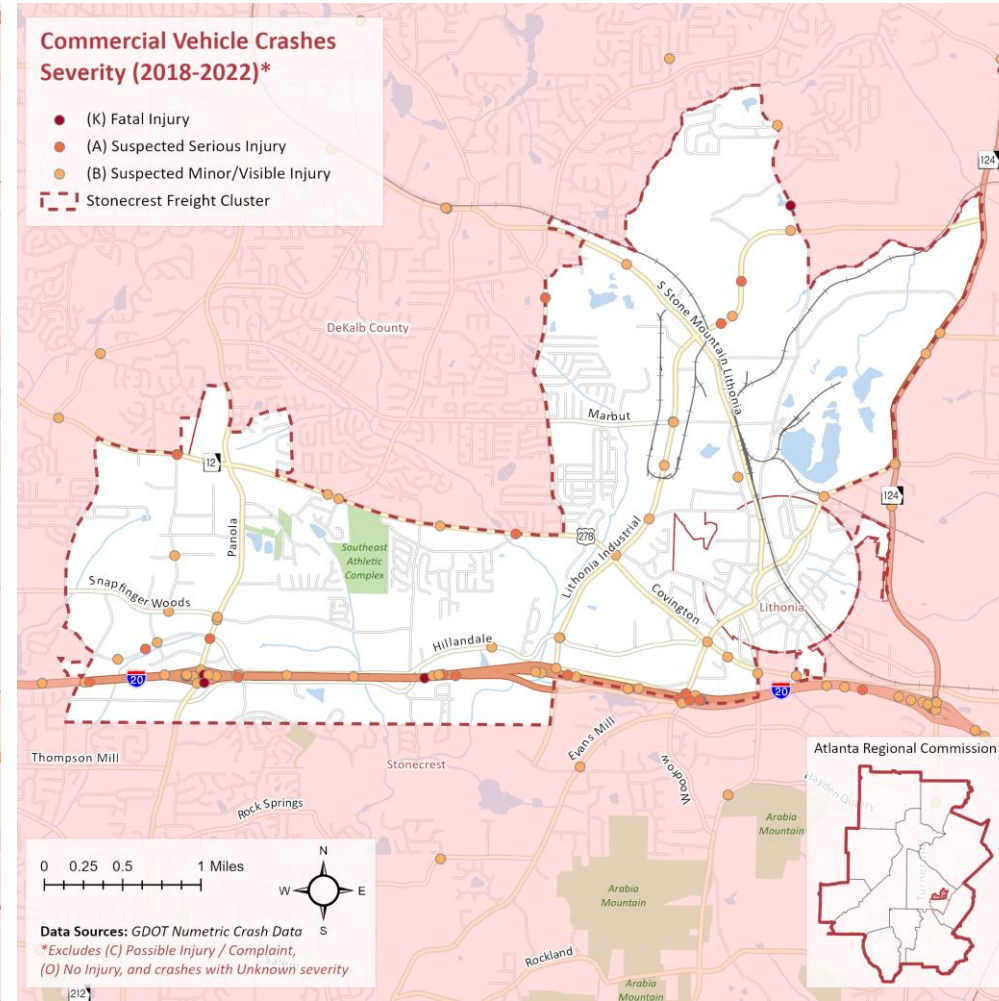
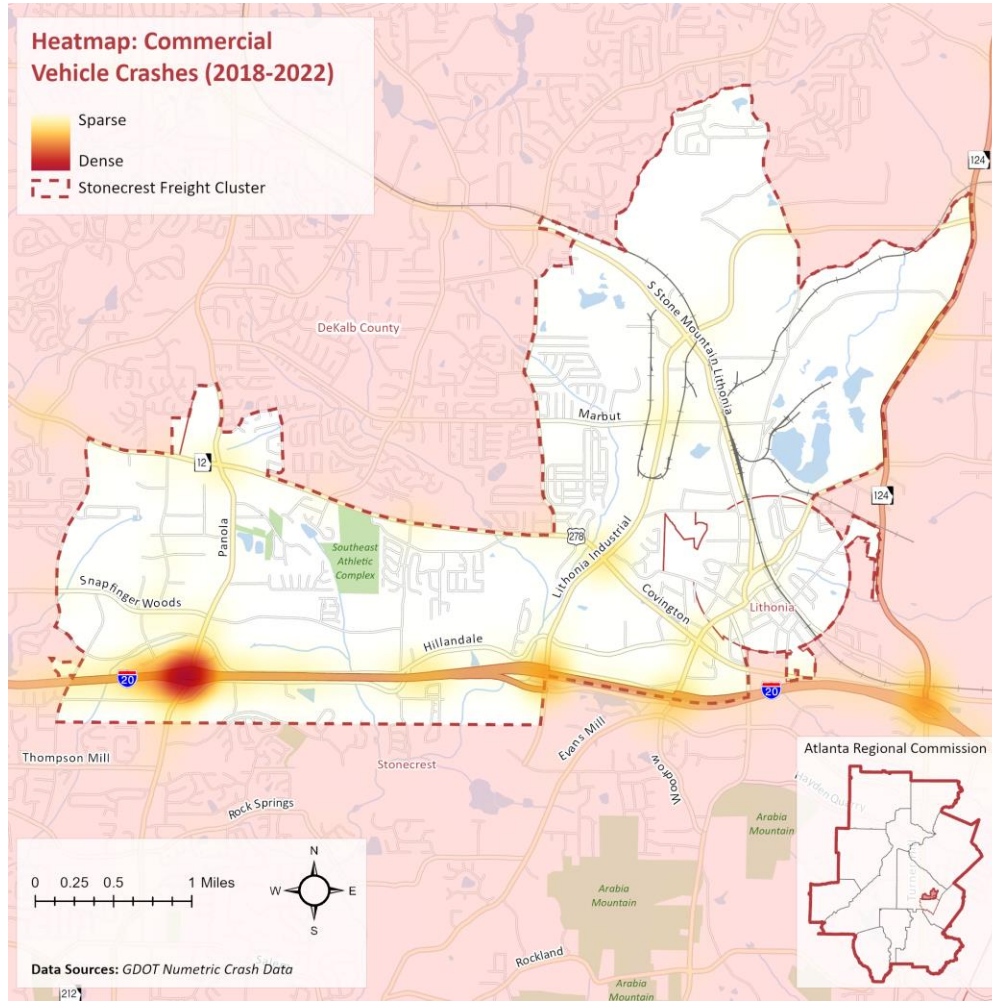
Commercial Vehicle Crashes

Highest truck crashes

- I-20
- Panola Road

Additional hotspots include

- I-20/Lithonia Industrial Blvd.
- Evans Mills Road



Workforce Characteristics: Commuters

Commute Travel Patterns

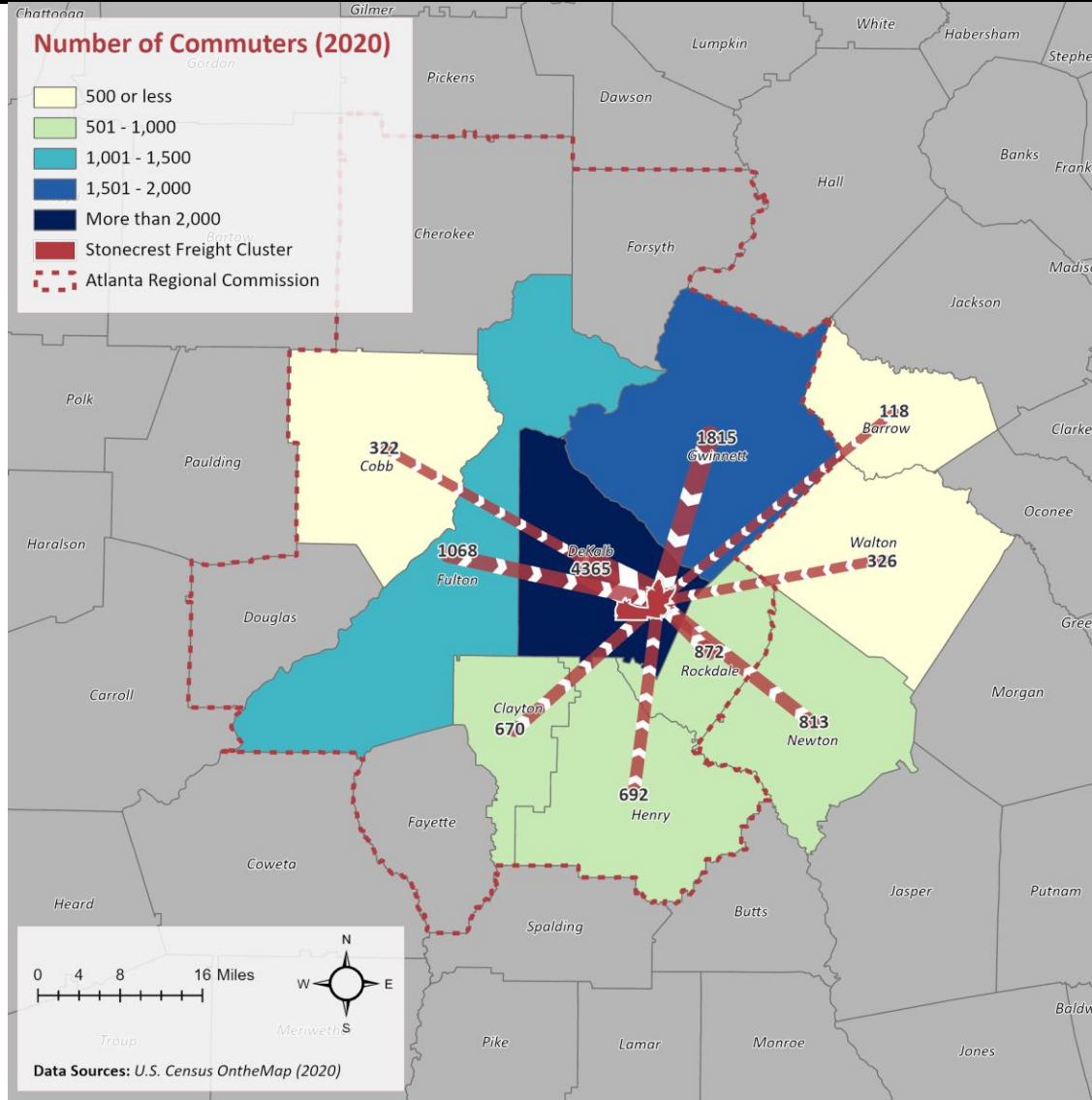
Majority of commuters from:

- DeKalb County

Significant number of commuters from:

- Gwinnett County
- Fulton County
- Rockdale County
- Newton County

18%+ coming from Other locations



Origins	Count	Share
DeKalb County, GA	4,365	32.3%
Gwinnett County, GA	1,815	13.4%
Fulton County, GA	1,068	7.9%
Rockdale County, GA	872	6.4%
Newton County, GA	813	6.0%
Henry County, GA	692	5.1%
Clayton County, GA	670	5.0%
Walton County, GA	326	2.4%
Cobb County, GA	322	2.4%
Barrow County, GA	118	0.9%
All Other Locations	2,465	18.2%
Total	13,526	100.0%



Next Steps:



Initiate Best Practices Report



Continue Inventory and Assessment



Begin Stakeholder Outreach Activities





FREIGHT CLUSTER PLAN

IN COOPERATION WITH **ARC**

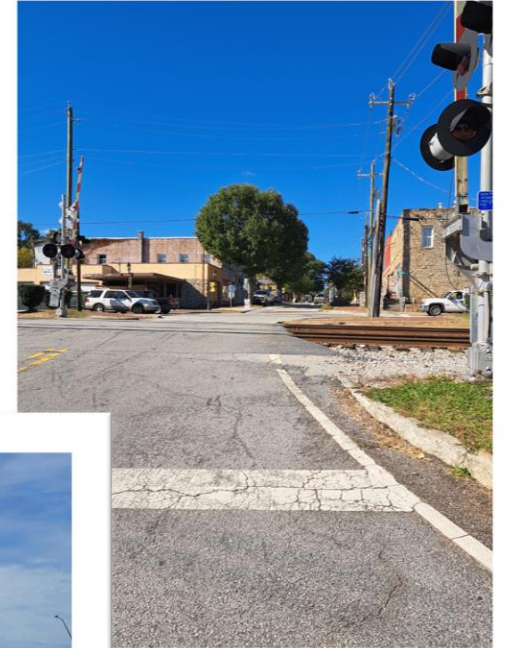
THANK YOU!

Wade Carroll

CONSULTANT PROJECT MANAGER

PHONE: (404) 566-1033

EMAIL: wcarroll@metroanalytics.com



ARC FREIGHT ADVISORY TASK FORCE
AUGUST 8, 2023

